

**“Automatic transmission fitting for
MERCEDES-BENZ E RENAULT”**

ENGLISH**FG 193/R16****APPLICATIONS**

TRANSMISSION MODEL	MANUFACTURER (MODEL)
7DCT300	Ford (Ecosport); Mercedes-Benz (Classe A); Renault (Clio, Espace, Fluence, Kadjar, Laguna, Megane, Scenic)
K7A240	Mercedes-Benz (Classe A, Classe B, CLA, GLA)
K7A350/K7X350	Mercedes-Benz (Classe B, CLA, GLA)
K7X400	Mercedes-Benz (CLA, GLA)

INSTRUCTIONS

1. Remove the battery
2. Remove the filter holder
3. Remove the filter
4. Screw the fitting FG 193/R16 instead of the filter

“AUTOMATIC TRANSMISSION FITTING FOR JEEP”

FG 193/R17**RELATED TOOL:****FG 193/R35**

APPLICATIONS

TRANSMISSION MODEL	MANUFACTURER (MODEL)
45RFE	JEEP (Grand Cherokee, Liberty)
5-45RFE	JEEP (Grand Cherokee, Liberty, Cherokee, Commander, Wrangler)

INSTRUCTIONS

1. Identify and disconnect the radiator flow pipe
2. Connect the fitting on the A.T.
3. Use extension FG 193/R35 on the connection points if it's necessary

**“Automatic transmission fitting for
FIAT, CITROEN, PEUGEOT, RENAULT”**



FG 193/R19

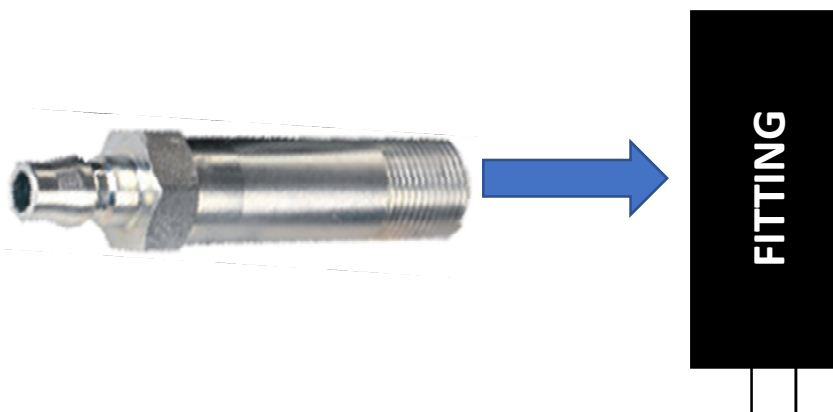


APPLICATIONS

TRANSMISSION MODEL	MANUFACTURER (MODEL)
AL4	FIAT (ULYSSE); LANCIA (PHEDRA)
DPO	CITROEN (C2, C3, C3 PICASSO, C4, C5, C-TRIOMPHE, DS3, ELYSEE, EVASION, FUKANG, PALLAS, XANTIA, XM, XSARA/XSARA PICASSO); KIA (206 BESTARI); NISSAN (PLATINA); PEUGEOT (206, 207, 208, 306, 307, 308, 405, 407, 408, 806, 2008, 3008, 406/406 COUPE); RENAULT (CLIO, ESPACE, KANGOO, LAGUNA, MEGANE, MODUS, SAFRANE, SANDERO, SCENIC, SYMBOL/THALIA)

INSTRUCTIONS

1. Locate and remove the heat exchanger located on the front driver side
2. Replace the heat exchanger with the supplied fitting
3. Example of connection on the A.T.:



**“Automatic transmission fitting for
RENAULT, MITSUBISHI, NISSAN”**



APPLICATIONS

TRANSMISSION MODEL	MANUFACTURER (MODEL)
JF613E	mitsubishi (DELICA D:5, LANCER, OUTLANDER, RVR); NISSAN (MURANO, PATHFINDER, QASHQAI / QASHQAI+2, X-TRAIL); RENAULT (ESPACE, KOLEOS, LAGUNA, LATITUDE, MEGANE, SCENIC)
REOF06A	NISSAN (ALMERA TINO, AVENIR, BLUEBIRD SYLPHY, CUBE CUBIC, PRAIRIE, PRIMERA, RNESSA, SERENA, TINO, WINGROAD)

INSTRUCTIONS

1. Locate and remove the heat exchanger located on the front driver side
- 2.
3. Connect the supplied fitting

**“Automatic transmission fitting for
MITSUBISHI”**



ENGLISH



FG 193/R22



APPLICATIONS

TRANSMISSION MODEL	MANUFACTURER (MODEL)
R4A51	MITSUBISHI (MONTERO XLS, MONTERO SPORT, CANTER)
R5A51	MITSUBISHI (MONTERO LIMITED)

INSTRUCTION

1. Identify and disconnect the radiator flow pipe
2. Connect the supplied fitting

**“Automatic transmission fitting for
FORD, RENAULT, PEUGEOT, VOLVO”**



FG 193/R25



APPLICATIONS

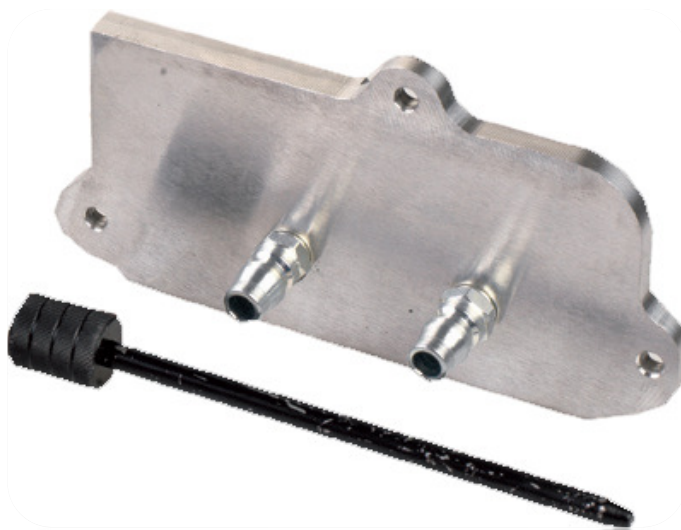
TRANSMISSION MODEL	MANUFACTURER (MODEL)
6DCT250	FORD (B-MAX, C-MAX, ECOSPORT, FIESTA, FOCUS, TRANSIT COURIER); MERCEDES-BENZ (CITAN); NISSAN (X-TRAIL); RENAULT (CAPTUR; CLIO; FLUENCE; KANGOO; LAGUNA; MEGANE; SCENIC; TWINGO); SMART (FORFOUR; FORTWO)
6DCT450 / WD	VOLVO (C30 / C30 R, C70, S40, S60, S80, V40, V50, V60, V70, XC60, XC90); DODGE (JOURNEY); FORD (C-COUPE; C-MAX; ESCAPE; FOCUS; GALAXY; MONDEO; S-MAX); LAND ROVER (FREELANDER(LR2); RANGE ROVER EVOQUE)
6DCT451	FORD (C-MAX; ESCAPE; FOCUS; FUSION; GALAXY, S-MAX); RENAULT (ESPACE, KADJAR, LAGUNA, SCENIC)
6DCT470	MITSUBISHI (CX, LANCER, OUTLANDER); PEUGEOT (4700)
DD	FORD (C-COUPE, FOCUS, C-MAX, FUSION)

INSTRUCTIONS

1. Locate and remove the A.T. oil filter
2. Replace the filter with the supplied fitting

**“Automatic transmission fitting for
FIAT, LAND ROVER”**

FG 193/R26



APPLICATIONS

TRANSMISSION MODEL	MANUFACTURER (MODEL)
ZF9HP48	CHRYSLER (200, TOWN & COUNTRY); FIAT (500X); HONDA (CIVIC, CR-V, ODYSSEY, PILOT); LAND ROVER (DISCOVERY SPORT, RANGE ROVER EVOQUE)
ZF9HP48H	CHRYSLER (TOWN & COUNTRY)

**“Automatic transmission fitting for
TOYOTA, SUZUKI, MAZDA”**

FG 193/R27



APPLICATIONS

TRANSMISSION MODEL	MANUFACTURER (MODEL)
K410	MAZDA (DEMIO); SUBARU (TREZIA); SUZUKI (SPLASH); TOYOTA (IST, PORTE, RACTIS, SIENTA, VITZ)
K411	MAZDA (DEMIO); SUBARU (TREZIA); TOYOTA (COROLLA, IQ, PORTE, PROBOX, RACTIS, VITZ)

**“Automatic transmission fitting for
TOYOTA, SUZUKI, MAZDA”**

FG 193/R28



APPLICATIONS

TRANSMISSION MODEL	MANUFACTURER (MODEL)
0AW	AUDI (A4, A5, A5 SPORTBACK, A6, A7)
OB5	AUDI (A4, A5, A5 SPORTBACK, A6, A7, Q5); PORSCHE (MACAN)
08HP	AUDI (Q7)

INSTRUCTIONS

1. Identify and disconnect the radiator flow pipe
2. Connect the supplied fitting

**“Automatic transmission fitting for
BMW, MINI, VOLVO”**

FG 193/R32



APPLICATIONS

TRANSMISSION MODEL	MANUFACTURER (MODEL)
AWF8F45 (TG-81LS)	BMW (SERIE 2 ACTIVE TOURER, SERIE 2 GRAN TOURER, X1); BUICK (CASCADA); CHEVROLET (CRUZE); LOTUS (ELISE); MINI (CLUBMAN, COUNTRYMAN, MINI); OPEL/VAUXHALL (ASTRA, CASCADA, INSIGNIA, ZAFIRA TOURER); PEUGEOT (5008); VOLKSWAGEN (CRAFTER); VOLVO (S60, S80, S90, V40, V60, V70, V90 XC, XC60, XC70, XC90)