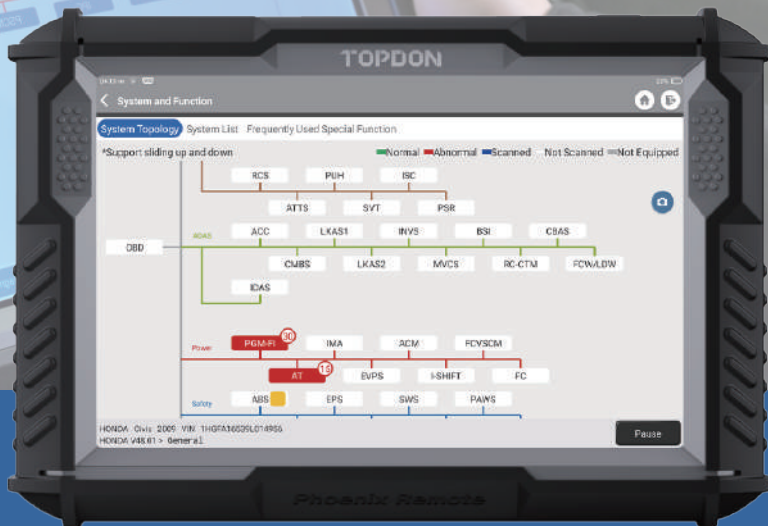




Phoenix Remote

The Future of Diagnostics

TOPDON®'s Phoenix Remote™ is an automotive diagnostic scanner with extensive coverage of over 200+ makes and 1000+ models. Featuring Remote Diagnosis, this tool offers unprecedented insight and convenience. This functionality enables real-time communication between smart tools, completes remote diagnosis of vehicles without space constraints, and leverages OE-level functions, making it a game-changing device for auto shops.



Features

- Local and Remote Diagnosis
- Built-in J2534, CAN2.0, DOIP, and CAN FD Protocols
- Cloud-based Programming and Online Coding
- Advanced Functions
- Covers more than 200+ makes and New Energy Vehicle Models
- Supports Augmented Reality (AR)
- Topology Mapping
- FCA Secure Gateway Access

Specs

Display: LCD 10.1", 1280 x 800
 CPU: 4-Core Processor, 2.0 GHz
 Operating System: Android 10.0
 RAM: 4G
 ROM: 128G
 Rear Camera: 13MP
 Battery Capacity: 12000mAh / 3.8V
 Operating Voltage: 9-36V
 Storage Temperature: -20°C~60°C (-4°F~140°F)
 Working Temperature: 0°C~50°C (32°F~122°F)
 Dimension: 291 x 199 x 50mm (11.46 x 7.83 x 1.97")
 Package Size: 563 x 412 x 184mm (22.16 x 16.22 x 7.24")
 Net Weight: 1760.0g (3.88 lb)
 Multilingual Support (13): English, French, German, Spanish, Portuguese, Russian, Japanese, Italian, Chinese(traditional), Hungarian, Dutch, Turkish, Polish

What's in the Box



- Phoenix Remote
- OBD II Extension Cable
- Battery Clamps
- Cigarette Lighter Cable
- Fuse x 4 (φ 5*20mm)
- Fuse x 2 (φ 6*30mm)
- Type-C to USB Cable
- NN-14+16 Nissan
- OBD I Adapter BOX Transfer line
- FT-3 Fiat
- Password Letter
- BZ-38 Benz
- TA-22 Toyota
- TA-17 Toyota
- G/V-12 GM/VAZ
- Power Adaptor
- Ethernet Cable
- Packing List
- User Manual
- B-20 BMW
- CR-6 Cheysler
- HA-3 Honda
- M/H-12+16 Mitsubishi/Hyundai