

# AUTOMATIC TRANSMISSION



**GEATEK** 

MADE TO LAST

# AUTOMATIC TRANSMISSION

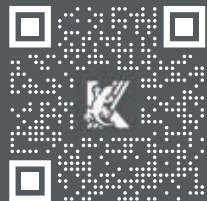
Hybrid vehicles and those equipped with the most advanced level 2 driver assistance systems (ADAS) require an automatic transmission to function. For this reason, the number of vehicles with automatic transmissions is constantly increasing.

With a growing number of cars featuring automatic transmissions, it is essential to offer this service professionally to your customers.

 **PREVENT COSTLY REPAIRS**

 **OFFER PROFESSIONAL SERVICES**

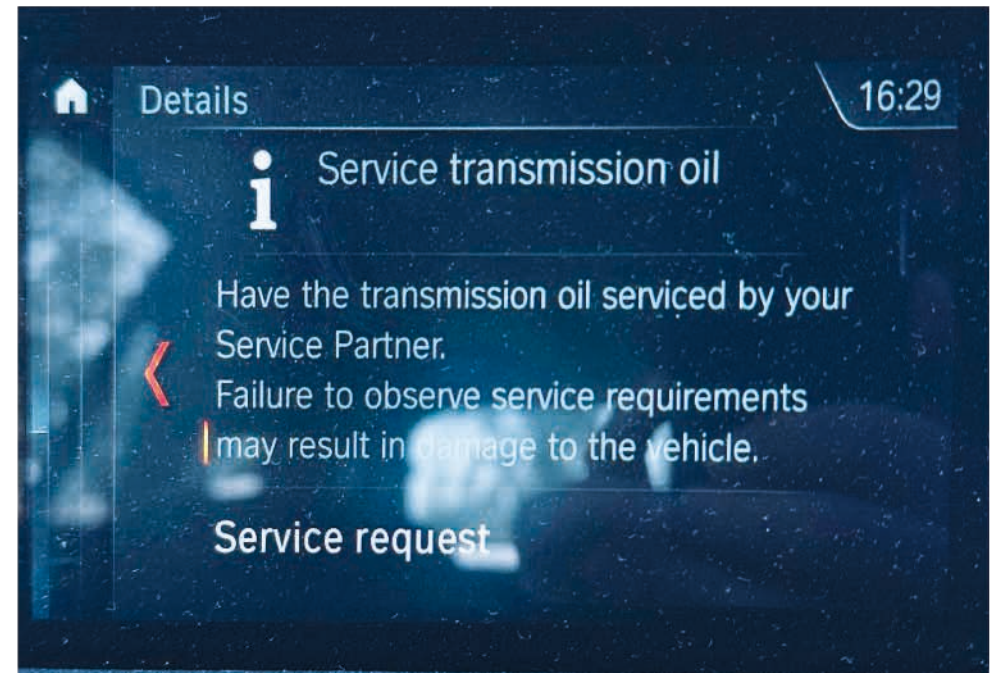
 **INCREASE YOUR PROFITS**



**WATCH  
THE VIDEO!**

## 1 CUSTOMER ESTIMATE AND ACCEPTANCE

GEAIDEA database allows you to provide the customer with a complete estimate including labor and the exact amount of oil required. It shows the maintenance intervals recommended by the manufacturer, or when not specified, it suggests an appropriate interval.



Currently, many car manufacturers recommend replacing the automatic transmission oil, and some even display a warning on the vehicle's onboard computer.

## 2 VEHICLE ROAD TEST

Testing the vehicle on the road before performing any type of service is **essential**. With a **few simple tests**, such as uphill starts or manual gear changes, you can determine whether the transmission is functioning properly. Once proper operation is confirmed, maintenance can proceed.

## 3 CONNECTION TO THE VEHICLE

To connect the KAMBIO KNX equipment to the vehicle, follow the specific connection instructions found on the GEAIDEA database. The procedure is illustrated with real photos showing the steps required to connect the adapters.

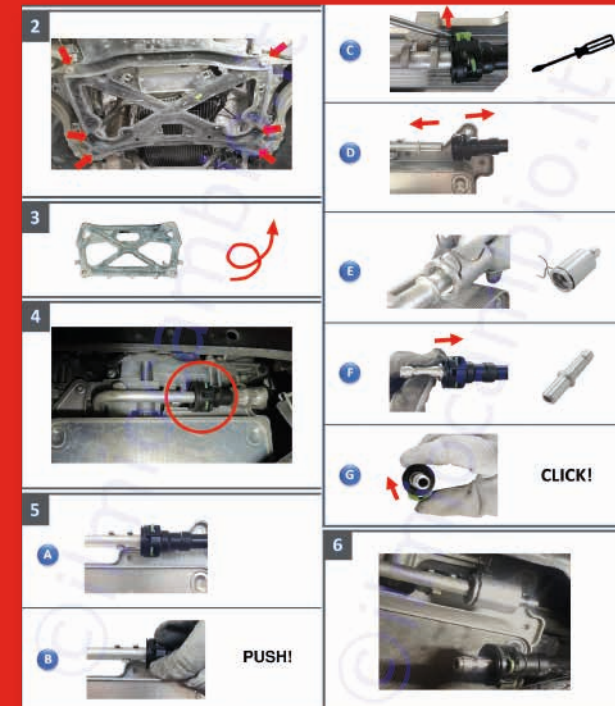


# GEAIDEA

DATABASE & TECHNICAL SUPPORT

GEAIDEA database provides all the necessary information for performing maintenance on the automatic transmission: where to find the transmission lines, how to disconnect them (with real photos), and how to correctly measure the oil level. You will also find all the information needed to replace the fluids in automated manual transmissions.

**With the adapters included in the kit, connecting to the vehicle will be extremely simple!**



## 4 AUTOMATIC TRANSMISSION FLUSH

After connecting the equipment to the vehicle, the KAMBIO KNX device provides step-by-step instructions on the display to carry out automatic transmission maintenance in a simple and safe manner.

**The first operation to perform** is the transmission flush: the equipment injects TK TRANSMISSION CLEANER into the transmission, which still contains used oil, and within 10 minutes performs the cleaning and filtration process.

Flushing is a crucial operation **to ensure the longevity of the transmission.**

KAMBIO KNX is equipped with **high-performance filters** that require periodic replacement.

## TK TRANSMISSION CLEANER

Oil-based cleaner that contains no solvents harmful to automatic transmissions. The 300 ml single-dose packaging (treats up to 15L) makes it very convenient to use.



## 5 OIL FLOW IDENTIFICATION

Before performing the oil replacement, KAMBIO KNX automatically identifies the flow direction to introduce new oil in the natural circulation direction of the transmission. This way, the operator does not need to determine which line is the supply and which is the return. The KAMBIO KNX **hoses can be connected to the vehicle in any direction** without needing to be swapped afterward.

# 6

## OIL EXCHANGE

The automatic transmission oil exchange is carried out entirely autonomously by the KAMBIO KNX device. During this phase, no action is required from the operator, who can monitor the progress through clear and intuitive screens. The used oil is drained into the dedicated tank, and new oil is immediately introduced into the transmission. This ensures that the **oil level remains constant** throughout the replacement process. The flow rate of the KAMBIO KNX pump is variable and automatically adjusts to the transmission's flow rate at all times.



## AUTOMATIC TRANSMISSION FLUIDS

GEATEK produces multi-specification fluids for automatic transmissions.

This makes it possible to meet the required specifications for the existing vehicle fleet using only four types of fluid:



### GLOBAL 5 ATF

High-viscosity fluid for torque converter transmissions



### EVO 9 ATF

Low-viscosity fluid for torque converter and hybrid transmissions



### CVT OIL

Fluid for continuously variable transmissions with belt or chain



### DSG OIL

Fluid for dual-clutch transmissions



The 20-liter format can be placed directly on the KAMBIO KNX scale. This saves time by avoiding the need to transfer the product.

# 7 FILTER REPLACEMENT

The filter should be replaced **after flushing and fully replacing the oil in the transmission**. This ensures that the installation takes place in a clean environment. Otherwise, sludge and metallic particles in the system would be trapped by the new filter, causing it to become saturated much sooner.

Some transmissions have internal filters that cannot be replaced during routine maintenance. The transmission manufacturer has specified that the internal filter should only be replaced after disassembling the transmission.



**FILTER REPLACEMENT**

Where do you want to put recovered fluid?

**Current canister**  
New canister

KAMBIO KNX guides the operator during the filter replacement process. When it is necessary to remove the oil pan, KAMBIO KNX measures the amount of recovered oil and recommends how much oil should be refilled.



## GEATEK KITS

For the replacement of filters and gaskets, we provide kits containing the necessary spare parts as well as complete instructions that guide the operator step by step with photos, diagrams, and tightening values.

This "turnkey" solution allows you to save time and also provides the necessary information for the replacement.

The GEATEK kits contain everything needed to perform the job properly and smoothly.

## 8 ADDITIVE FOR NEW OIL

At the end of maintenance, an additive is added to the new oil to optimize performance and delay oxidation of the new fluid. GEATEK has formulated AT PERFORMANCE and CVT-DCT PERFORMANCE, to be used depending on the type of transmission, in single-dose 300 ml formats.





# KAMBIO KNX AND ACCESSORIES

The equipment allows for complete and guided maintenance of the automatic transmission in a simple and safe way. KAMBIO KNX is capable of effectively flushing the entire automatic transmission circuit in just 10 minutes. Each phase is fully automated and safe for the mechanic and the staff.

Dimensions: L = 540 mm, H = 1120 mm, P = 460 mm.

Weight: ~ 48 kg. Power supply: 12 Vdc from the vehicle

- KAMBIO KNX      GEA 10030
- GEAIDEA        GEA 11000

## GEARBOX SMART (2025)



**GEA 14001**  
ATF ADAPTORS KIT GEARBOX  
SMART (2025)

## GEARBOX PLUS (2025)



**GEA 14002**  
ATF ADAPTORS KIT GEARBOX  
PLUS (2025)



**Geatek Srl**

Via per Sacca, 58/1  
43052 Colorno (PR) Italy  
+39 0521 815204

[info@geatek.it](mailto:info@geatek.it)  
[geatek.it](http://geatek.it)